



MANTEN MARINA



P O Box 30 Deneysville 1932
1 Waverley Road Deneysville 1932

CK: 1995/04951523

TEL: (016) 371-1301

www.mantenmarina.co.za
email: mantens@mantenmarina.co.za

YACHT INVENTORY

DESIGN	: Jaguar 36	NAME	: Jaguar 36_01
YEAR	:	BERTHED	: Manten Marina
COL	: Yes	COF	:
L.O.A.	: 10.97 m	L.W.L.	:
BEAM	: 7.20 m	DISPL.	: +- 6 500 kg
DRAFT	: 1.00 m	STEERING	: Wheel
RIG	: Sloop	MATERIAL	: GRP
BUILDER	: Cats For Africa / BTS	DESIGNER	: Eric Schoeman / Jeff Schionning

COMMENTS:

Quadriaxial fibreglass, balsacore and orthophthalic polyester resin with osmosis protection
Black Antifouling; 2 Ignition keys; Equipment Manuals; Engine Manual



RIG:

Mast

Deck mounted anodised aluminium alloy extrusion
Single spreader mast
All halyards internal in mast
Conduit for all wiring
Wired with combo steaming / deck light and anchor light
Bow sprit for reaching sails

Boom

Anodised aluminium alloy extrusion
Welded in 4 sheaves box per outhaul reefing lines

Standing Rigging

1 Forestay
4 Side panels
Stays consist of swaged terminals on 1 x 19 stainless steel wire with open turnbuckles
Harken Batcar system
Harken Roller Furler

Various jammers and deck organisers

Running Rigging

Main halyards 2:1 with a headboard shackle
Topping lift doubles as a spare halyard
1 Pair of Dacron Genoa sheets
1 Genoa halyard
1 Spinnaker halyard



SAILS:

33 sq/m Genoa & Hardware

8 oz Dacron Genoa
Genoa tracks, winches, cars, deck organiser and jammers located on coachroof
3 Harken electric winches with breakers
Harken Roller furling unit 2

54 sq/m Mainsail & Hardware

Fully battened 9.18oz Cruising Dacron Fathead Mainsail and Stack-pack
 Harken mainsail sheet double traveller, car and control with stoppers
 3 Reefing points
 Adjustable topping lift
 All lines lead through desk organisers and jammers on coach roof back to helm station for ease of shorthanded sailing.



DECK HARDWARE:

Front Beam - Forestay and Bridle

The Front Beam is an Aluminium Compression Member That Supports the Forestay Bridle, With Walkway From Forward Hatch to Front Beam with Two Trampolines.



Fairleads

2 - Forward

Mooring Cleats - 10

2 Cross Beam
 2 Outside Forward Hull

2 Aft Outside Hull



Stanchions

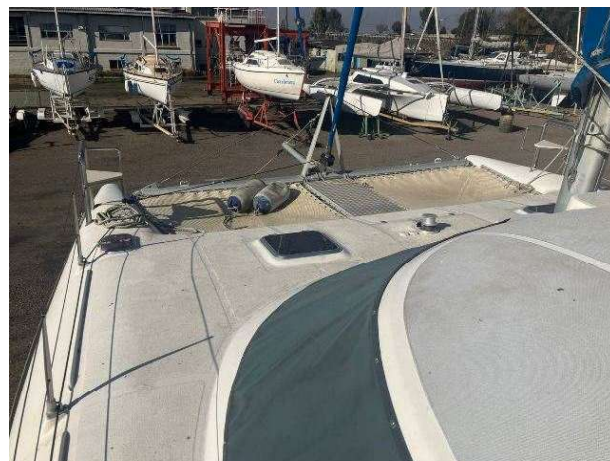
4 X Stainless Steel Stanchions with Double Wire Per Side
 Stainless Steel Pushpit And Pulpits

Toe Rail

GRP Toe Rail Moulded Into Deck

Trampolines

2x Plastic Coated Nylon Trampolines



Opening Hatches - 13/14

6 Saloon (4 Brand new in boxes awaiting insatallation)
 1 Per Head
 1 Per Aft Cabin
 1 Per Forward Cabins

Windows

Plexiglas In Saloon

Cockpit

Stainless steel targa bar and walkway

Anti-skid moulded into decks and coachroof
Deck painted in Kiwi Grip
Aft double seating in stainless steel and GRP

Chain Plates

316 stainless steel bolted into primary reinforcements

Steering Gear on port side

Hydraulic steering system
2 Rudders linked together by via hydraulics
Helm seat

Deck Fill Inlets

Fresh water
Fuel

Deck Lockers

1 bow
1 cockpit
2 on dive platform



INSTRUMENTS:

Navigation Station / Electrics

Saloon chart table
Tacktic - log speed depth and wind speed at helm station and repeater.
Victron Solar Charge Controllers
Victron Inverter
Victron Battery Charger
Victron Cerbo Power management
Victron BMV 702 Battery Management
Raymarine hydraulic autopilot
VHF Radio and antenna
Compass at helm station
Radio / CD with 2 speakers in saloon
12 Volt outlet
Fluorescent light

ELECTRONICS:

Batteries

2x 200 AMP HR House batteries - lead crystal

2x 60 AMP HR engine batteries



Distribution Panel

Blue Sea distribution board
220 Volt distribution board



12 Volt Circuits

Main breaker
18 Breakers: 5 - 15 AMP
Combine digital meter
2 x 100W solar panels
30A Charge control



Lights

Heads - overhead down lighters
Aft cabins - each with 2 down lighters
Galley - down lighters overhead
Saloon - overhead down lighters on dimmers
Navigation station - light

Passage - down lighters
 Steaming / deck light, compass light
 Anchor light & running lights
 Cockpit light
 Front spotlights

MOTOR:

2x 21 HP Nanni Diesel saildrive motors
 Fuel - 249 l capacity
 Epoxy Fuel tanks
 25l Hot water heater
 In-line fuel filters



ACCOMMODATION: **INTERIOR APPOINTMENTS**



Four Cabin Layout

Two Forward Cabins
 Queen size beds
 En-suite heads with vetus electric toilets
 Cupboards
 Ceiling liners finished in white vinyl

2 Reading lights
 Bulkheads and partitioning in Cherrywood formica
 Teak and Holly laminated flooring
 Skylight in each forward cabin



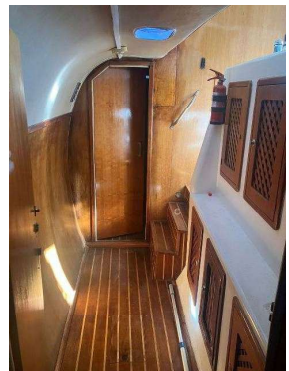
Port Forward Heads & Vanity

Separate heads
 Separate vanity, basin & mirror
 Full stand up shower
 Shelves
 Hatch



Aft Cabins

Queen size beds
 Large lockers with wooden doors
 Down lighters
 Hatch at foot of bed
 Large overhead hatch
 Opening porthole
 Hanging lockers & cupboards
 Teak and Holly laminated flooring
 Step up onto bunk bed



Saloon

8-seater settee & GRP saloon table
Wrap around window give an open vista and view
Large 4 panel folding armour-plate glass cockpit door for convenient outdoor / indoor living
Counter sunk lights in ceiling with dimmer
Cherry wood interior finishes
Teak and Holly laminated flooring

GALLEY:

Galley up
2 Burner hob with oven
2 gas bottles
Ample storage cupboards
Large cupboards on inside of hull
Sink, draining board, hot & cold pressurised water system
Fridge with freezer compartment inside



PLUMBING:

249L pressurised freshwater capacity
Stainless steel tanks
1 Manual bilge pumps
4 Electric bilge pumps

SAFETY EQUIPMENT:

Safety and Anchoring System

Double bow roller
2 Winch handles
2 Bilge pump handles
Vetus Windlass with breaker
Anchor, Chain & Warp
Fenders

PRICE: R 2 310 00.00

N.B. The above information is to the best of our knowledge correct. Manten Marina cannot be held liable for the condition of equipment or for any items on the inventory being absent from the boat. The onus is on the purchaser to check the inventory of the craft and to satisfy himself that all the necessary sale requirements have been met.

Life Ring
Life Jackets
Boat Hook
4 Fire Extinguishers
First Aid Kit



EXTRAS:

Boom Cover/Stackpack
Boarding Ladder



Initials